

... Minimize Bleed, Maximize Savings

All CHROMSPEC™ GC septa are formulated to low bleed specifications while maintaining exceptional needle penetration and sealing characteristics, long life and reduced injection port sticking. To ensure their performance, they are packaged in non-contaminating glass jars.

Samples are available.

A Chromatographic Specialties Inc. coffee mug is shipped with every 50 and 100 pack order of CHROMSPEC™ septa (while quantities last).



Septa with Guide Hole

HT Red and Longevity are CHROMSPEC™ premium quality septa

- State-of-the-art silicone formulation for ultra-low bleed
- Precision injection molded for exact fit
- Available guide hole for repeatable penetration and reduced coring

CHROMSPEC™ HT RED (High Temperature)

Septa Diameter	Package 25		Package 50		Package 100	
	Product Number	Price	Product Number	Price	Product Number	Price
9.5mm	C7910295	\$46.40	C791029550	\$59.80	C7910295C	\$82.60
10.0mm	C7910210	46.40	C791021050	59.80	C7910210C	82.60
11.0mm	C7910211	46.40	C791021150	59.80	C7910211C	82.60
Shimadzu Plug	C79102SP	46.40	C79102SP50	59.80	C79102SPC	82.60
9.5mm with guide hole	C7910295GH	46.40	C7910295GH50	59.80	C7910295GHC	82.60
10.0mm with guide hole	C7910210GH	46.40	C7910210GH50	59.80	C7910210GHC	82.60
11.0mm with guide hole	C7910211GH	46.40	C7910211GH50	59.80	C7910211GHC	82.60

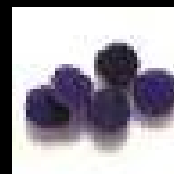
- Low bleed
- Stable to 350°C



CHROMSPEC™ LONGEVITY

Septa Diameter	Package 25		Package 50		Package 100	
	Product Number	Price	Product Number	Price	Product Number	Price
9.5mm	C7910595	\$41.30	C791059550	\$53.70	C7910595C	\$74.30
10.0mm	C7910510	41.30	C791051050	53.70	C7910510C	74.30
11.0mm	C7910511	41.30	C791051150	53.70	C7910511C	74.30
9.5mm with guide hole	C7910595GH	41.30	C7910595GH50	53.70	C7910595GHC	74.30
10.0mm with guide hole	C7910510GH	41.30	C7910510GH50	53.70	C7910510GHC	74.30
11.0mm with guide hole	C7910511GH	41.30	C7910511GH50	53.70	C7910511GHC	74.30

- Long Life Septa
- Stable to 300°C



CHROMSPEC™ Emerald HT and Teflon Coated compression manufactured septa offer superior performance in GC applications. Emerald-HT septa are designed for high sensitivity (MS) analysis. Teflon Coated septa are useful when analyzing active components such as fatty acids or sterols which may adhere to conventional silicone septa surfaces.

CHROMSPEC™ EMERALD-HT

Septa Diameter	Package 25		Package 50		Package 100	
	Product Number	Price	Product Number	Price	Product Number	Price
9.5mm	C6613295	\$37.10	C661329550	\$45.40	C6613295C	\$61.90
10.0mm	C6613210	37.10	C661321050	45.40	C6613210C	61.90
11.0mm	C6613211	37.10	C661321150	45.40	C6613211C	61.90
Shimadzu/SRI Plug	C66132SP	37.10	C66132SP50	45.40	C66132SPC	61.90

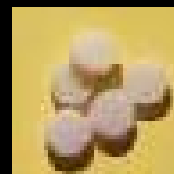
- Excellent for MS Applications
- Stable to 325°C



CHROMSPEC™ TEFLON COATED

Septa Diameter	Package 25		Package 50		Package 100	
	Product Number	Price	Product Number	Price	Product Number	Price
9.5mm	C7910995	\$41.30	C791099550	\$53.70	C7910995C	\$74.30
10.0mm	C7910910	41.30	C791091050	53.70	C7910910C	74.30
11.0mm	C7910911	41.30	C791091150	53.70	C7910911C	74.30

- Teflon Coated for inertness
- Stable to 250°C



Pricing is subject to change without prior notice. For the most current pricing, contact the CSI

Customer Service team at 1-800-267-8103 or email sales@chromspec.com